

## 阅读申明

- 1.本站收集的数据手册和产品资料都来自互联网，版权归原作者所有。如读者和版权方有任何异议请及时告之，我们将妥善解决。
- 2.本站提供的中文数据手册是英文数据手册的中文翻译，其目的是协助用户阅读，该译文无法自动跟随原稿更新，同时也可能存在翻译上的不当。建议读者以英文原稿为参考以便获得更精准的信息。
- 3.本站提供的产品资料，来自厂商的技术支持或者使用者的心得体会等，其内容可能存在描述上的差异，建议读者做出适当判断。
- 4.如需与我们联系，请发邮件到marketing@iczoom.com，主题请标有“数据手册”字样。

## Read Statement

1. The datasheets and other product information on the site are all from network reference or other public materials, and the copyright belongs to the original author and original published source. If readers and copyright owners have any objections, please contact us and we will deal with it in a timely manner.
2. The Chinese datasheets provided on the website is a Chinese translation of the English datasheets. Its purpose is for reader's learning exchange only and do not involve commercial purposes. The translation cannot be automatically updated with the original manuscript, and there may also be improper translations. Readers are advised to use the English manuscript as a reference for more accurate information.
3. All product information provided on the website refer to solutions from manufacturers' technical support or users the contents may have differences in description, and readers are advised to take the original article as the standard.
4. If you have any questions, please contact us at marketing@iczoom.com and mark the subject with "Datasheets".

# Power Supplies

## DC to AC Inverters

### Connector type, Dimming, 4W, For 1 Bulb

## CXA Series CXA-L0605-VJL

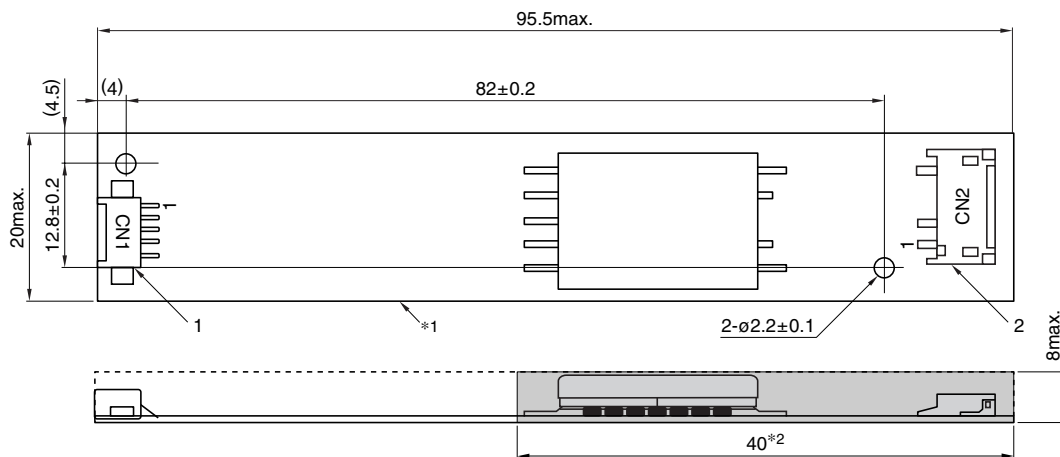
### FEATURES

- The CXA-L0605-VJL is an inverter for cold cathode fluorescent lamps and features a built-in dimmer.
- Because they employ advanced output current control, fluctuations in input voltage, load, and distributed capacitance have virtually no effect on brightness.
- Output open and short circuit conditions result in no damage, heat generation, or other difficulties.
- Safe design that includes a built-in overcurrent protection element.
- Insulation is simplified due to flat backside surface of board.

### TEMPERATURE AND HUMIDITY RANGES

Temperature range (°C)	Operating	0 to +60
	Storage	-20 to +85
Humidity range(%)RH		95max.
		[Maximum wet-bulb temperature 38°C]

### SHAPES AND DIMENSIONS



\*1 Substrate(PWB: Printed wiring board): Flame retardant material UL94V-0(FR-4 or CEM-3) t=1mm

\*2 : High-voltage generator (The entire surface within a range of 40mm away from the end of the base in the output)

Weight: 14.5g typ.

Dimensions in mm

Connector manufacturer's company and type				Symbol
1	Input connector	Morex Japan Co., Ltd.	53261-0590	CN1
2	Output connector	Japan Solderless Terminal Co., Ltd.	SM02(8.0)B-BHS-1	CN2

### TERMINAL NUMBERS AND FUNCTIONS

#### CN1

Terminal No.	Functions	Symbol
CN1-1	Input voltage Edc: 4.75 to 5.25V 5V[nom.]	Vin
CN1-2	0V	GND
CN1-3	Remote voltage Edc 0V: off/5 to 5.25V:on	Vrmt
CN1-4	Brightness dimmer voltage* Edc: 0 to 3V(Maximum brightness on 0V)	Vbr
CN1-5	Used in the internal circuits, do not connect.	N.C.

\* Brightness can be controlled by adjusting Vbr within a range of 0 to 3V.

#### CN2

Terminal No.	Functions	Symbol
CN2-1	Output[High voltage] Irms 3 to 6mA	VHIGH
CN2-2	—	N.C.
CN2-3	Output[Low voltage] (2V)	VLOW

# Power Supplies

## CXA Series CXA-L0605-VJL

DC to AC Inverters

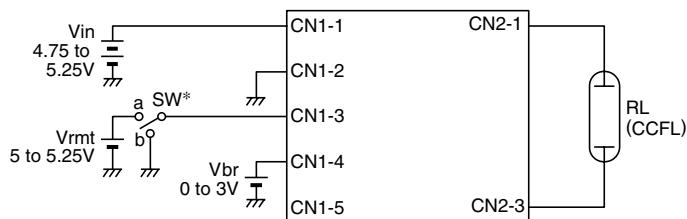
Connector type, Dimming, 4W, For 1 Bulb

### ELECTRICAL CHARACTERISTICS

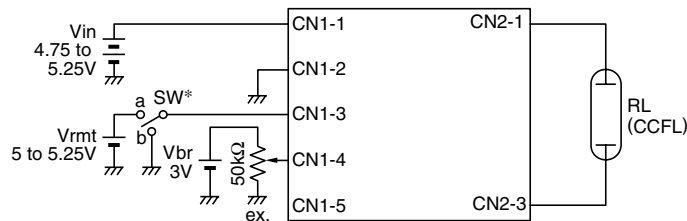
Items	Unit	Symbol	Specifications			Conditions		Ta(°C)	RL(kΩ)	Brightness
			min.	typ.	max.	Vin(V)	Vbr(V)			
Output current I <sub>rms</sub>	mA	I <sub>out</sub>	5.3	6	6.7	5±0.25	0	0 to 60	70 to 90	Maximum
			5.4	6	6.6	5±0.25	0	23±5	80	Maximum
			2.5	3	3.5	5±0.25	3	0 to 60	226	Minimum
Input current I <sub>dc</sub>	A	I <sub>in</sub>	—	0.7	0.8	5	0	23±5	80	
Oscillation frequency	kHz	FL	35	45	55	5±0.25	0	0 to 60	70 to 90	
Open circuit output voltage E <sub>rms</sub>	V	V <sub>open</sub>	1500	1700	—	5±0.25	0	0 to 60	∞	

### TYPICAL CONNECTIONS

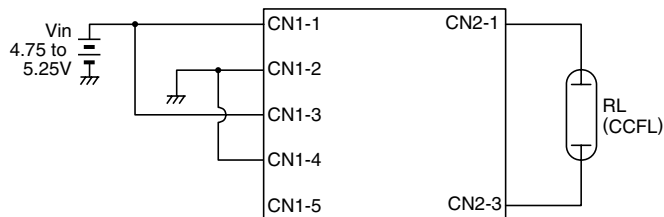
#### EXAMPLE OF VOLTAGE DIMMER CONTROL



#### EXAMPLE OF POTENTIOMETER DIMMER CONTROL



#### NO DIMMER CONTROL



\* SW a:on, b:off

### BRIGHTNESS DIMMER VOLTAGE-OUTPUT CURRENT CHARACTERISTICS

