

阅读申明

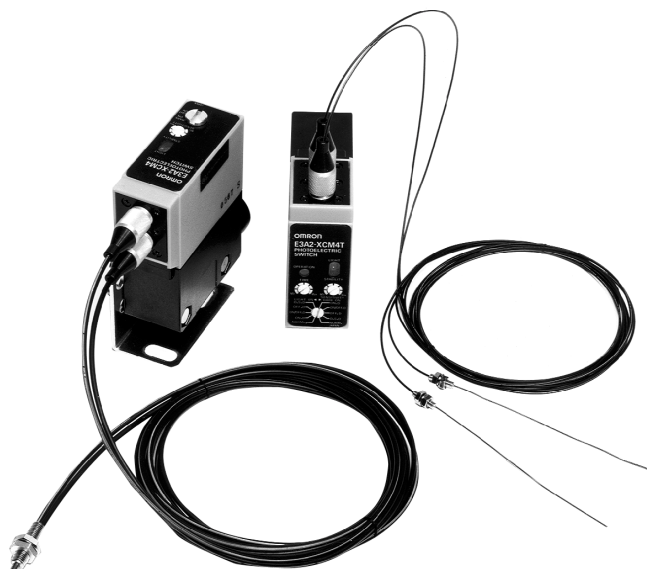
- 1.本站收集的数据手册和产品资料都来自互联网，版权归原作者所有。如读者和版权方有任何异议请及时告之，我们将妥善解决。
- 2.本站提供的中文数据手册是英文数据手册的中文翻译，其目的是协助用户阅读，该译文无法自动跟随原稿更新，同时也可能存在翻译上的不当。建议读者以英文原稿为参考以便获得更精准的信息。
- 3.本站提供的产品资料，来自厂商的技术支持或者使用者的心得体会等，其内容可能存在描述上的差异，建议读者做出适当判断。
- 4.如需与我们联系，请发邮件到marketing@iczoom.com，主题请标有“数据手册”字样。

Read Statement

1. The datasheets and other product information on the site are all from network reference or other public materials, and the copyright belongs to the original author and original published source. If readers and copyright owners have any objections, please contact us and we will deal with it in a timely manner.
2. The Chinese datasheets provided on the website is a Chinese translation of the English datasheets. Its purpose is for reader's learning exchange only and do not involve commercial purposes. The translation cannot be automatically updated with the original manuscript, and there may also be improper translations. Readers are advised to use the English manuscript as a reference for more accurate information.
3. All product information provided on the website refer to solutions from manufacturers' technical support or users the contents may have differences in description, and readers are advised to take the original article as the standard.
4. If you have any questions, please contact us at marketing@iczoom.com and mark the subject with "Datasheets".

Slim Amplifier with Plug-in Outputs, Built-in Time Delays

- Universal supply voltage for AC/DC operation
- Plug-in replaceable outputs, relay or solid state
- Light-ON/Dark-ON operation, switch selectable
- Uses E32-series fiber-optic cables - over 150 models available
- Standard 3 A relay output



Ordering Information

■ AMPLIFIERS

Part number	E3A2-XCM4	E3A2-XCM4T	E3A2-XCM4D
Built-in timer	Not provided	Provided	
Timer functions	—	ON-delay, OFF-delay, one-shot, or equal ON-delay and OFF-delay (0.1 to 5 seconds)	Independently adjustable ON-delay and OFF-delay (0.1 to 5 seconds)

■ ACCESSORIES (ORDERED SEPARATELY)

Description	Part number
Solid-state output modules	AC (SCR output module; 200 mA, 250 VAC max. load)
	DC NPN-SPDT output module; 200 mA, 30 VDC max. load
	DC PNP-SPDT output module; 30 VDC max. load
Optional mounting chuck for armored fiber-optic cables	E39-FU1-1

■ REPLACEMENT PARTS

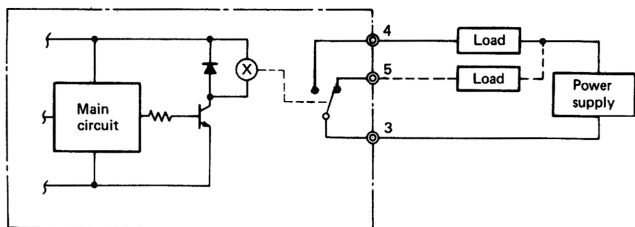
Description	Part number
Relay, output module, SPDT, 3 A at 250 VAC (output supplied with each sensor)	G6C-2117P-DC8
Mounting bracket (supplied with each sensor)	E39-L34
Mounting chuck for standard fiber-optic cables (included with sensor)	E39-FU1

Specifications

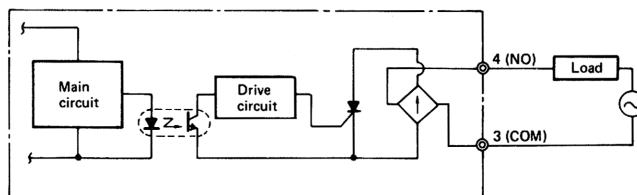
Part Number			E3A2-XCM4	E3A2-XCM4T	E3A2-XCM4D
Supply voltage			24 to 240 VAC, 50/60 Hz; 12 to 240 VDC		
Power consumption	Relay output type and DC solid-state output type		1.5 W max.		
	AC solid-state output type		2 VA max.		
Required fiber-optic cables			E32-series fiber-optic cables; armored cables require optional mounting chuck (see Accessories)		
Light source			Pulse modulated red LED		
Operating mode			Light-ON/Dark-ON, switch selectable		
Sensitivity			Adjustable		
Mutual interference protection			Provided		
Control output	Relay	Type	SPDT with G6C-2117P-DC8 output module (standard)		
		Max. load	3 A, 250 VAC (p.f. = 1); 3 A, 30 VDC		
	AC solid-state	Type	SCR with G3K-2R2P-1 output module (optional)		
		Max. load	200 mA, 250 VAC		
		Min. load	5 mA		
		Max. inrush	2 A		
		OFF-state leakage current	1 mA max.		
	DC solid-state	Type	NPN-SPDT with G3KD-YR2P-1 output module (optional) PNP-SPDT with G3KD-YR2P-2 output module (optional)		
		Max. load	200 mA, 30 VDC		
		Max. on-stage voltage drop	2 VDC at 200 mA		
Response time (ON and OFF)		Relay	15 ms max. with G6C-2117P-DC8 output module (standard)		
		AC solid-state output	30 ms max. with G3K-2R2P-1 output module (optional)		
		DC solid-state output	1 ms max. with G3KD-YR2P-1 or -2 output modules (optional)		
Timing functions		Type	—	ON-delay, OFF-delay one-shot, equal ON- and OFF-delays, or no timer; switch selectable	Independent ON-delay and OFF-delay
		Range	—	0.1 to 5 seconds	0.1 to 5 seconds
Circuit protection		Output short-circuit	Provided with AC solid-state and DC solid-state output modules only		
		DC power supply reverse polarity	Provided		
Indicators			Light incident (red LED), Output Stability (green LED)	Light incident (red LED), Output Stability (green LED) Output Operation (yellow LED)	
Materials		Lens	Plastic		
		Case	Plastic		
Mounting			Side surface mount with two through holes; Bracket E39-L34 and hardware included		
Connections		Conduit	1/2-14 NPT		
		Wire	Terminal screws		
Weight			200 g (7.1 oz.)		
Enclosure ratings		UL	1		
		NEMA	1, 4, 4X, 12		
		IEC 144	IP66		
Approvals		UL	Listed, File Number E41515		
		CSA	—		
Ambient temperature		Operating	-25° to 55°C (-13° to 131°F)		
		Storage	-30° to 70°C (-22° to 158°F)		

OUTPUT CIRCUIT DIAGRAMS

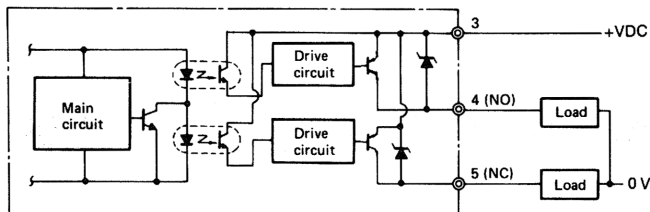
Relay output



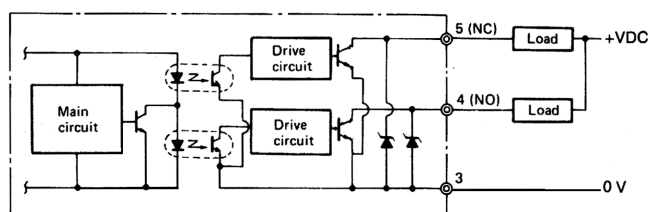
AC solid-state output



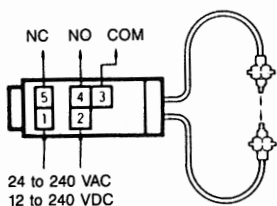
DC solid-state PNP output



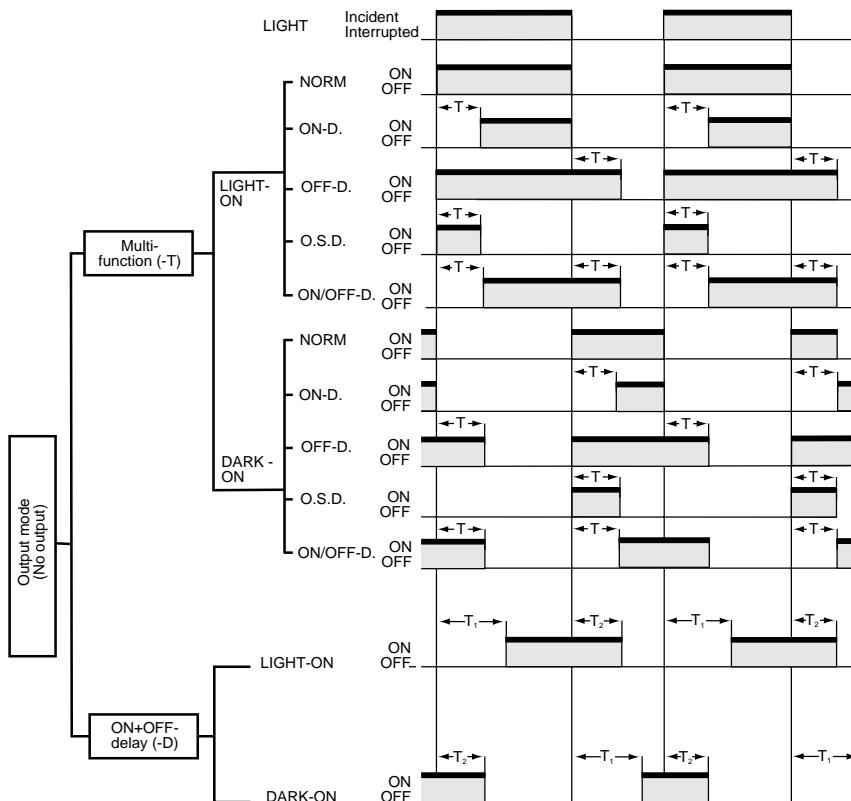
DC solid-state NPN output



CONNECTIONS



TIMING CHARTS

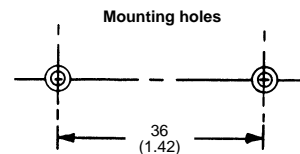
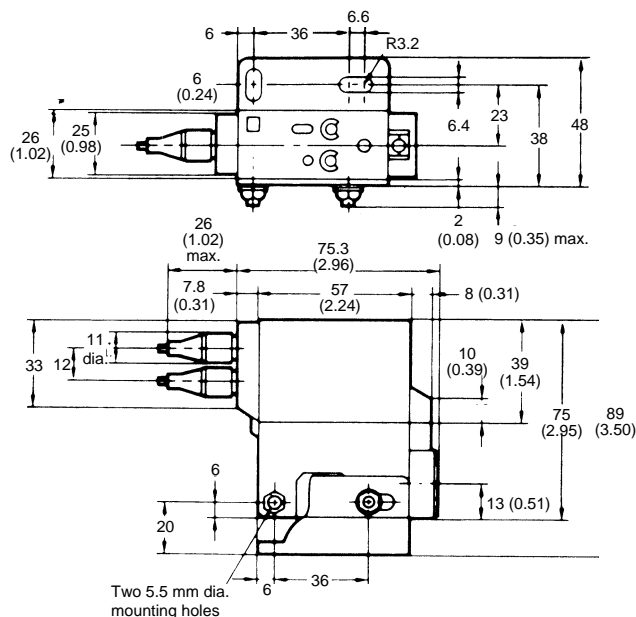
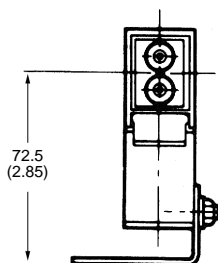
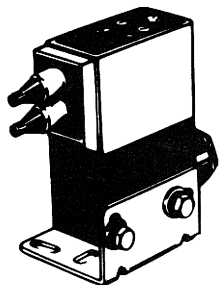


- Note:
1. For E3A2-XCM4 amplifier without built-in timer functions, operation follows the NORM mode shown with multi-function time delay model.
 2. T_1 , T_2 and T denote set time, variable within 0.1 to 5 second range.
 3. For multi-function time delay model (E3A2-XCM4T), the ON- and OFF-delay time settings will be the same for T_1 and T_2 .
 4. For ON- and OFF-delay model (E3A2-XCM4D), T_1 and T_2 are independently variable.

Dimensions

Unit: mm (inch)

■ AMPLIFIERS



■ FIBER-OPTIC CABLES

Refer to E32 data sheet for dimensions of plastic fiber-optic cables and accessories.

OMRON

OMRON ELECTRONICS LLC

One East Commerce Drive
Schaumburg, IL 60173

1-800-55-OMRON

OMRON ON-LINE

Global - <http://www.omron.com>
USA - <http://www.omron.com/oei>
Canada - <http://www.omron.com/oci>

OMRON CANADA, INC.

885 Milner Avenue
Scarborough, Ontario M1B 5V8
416-286-6465